



***A Home for MIT Music***

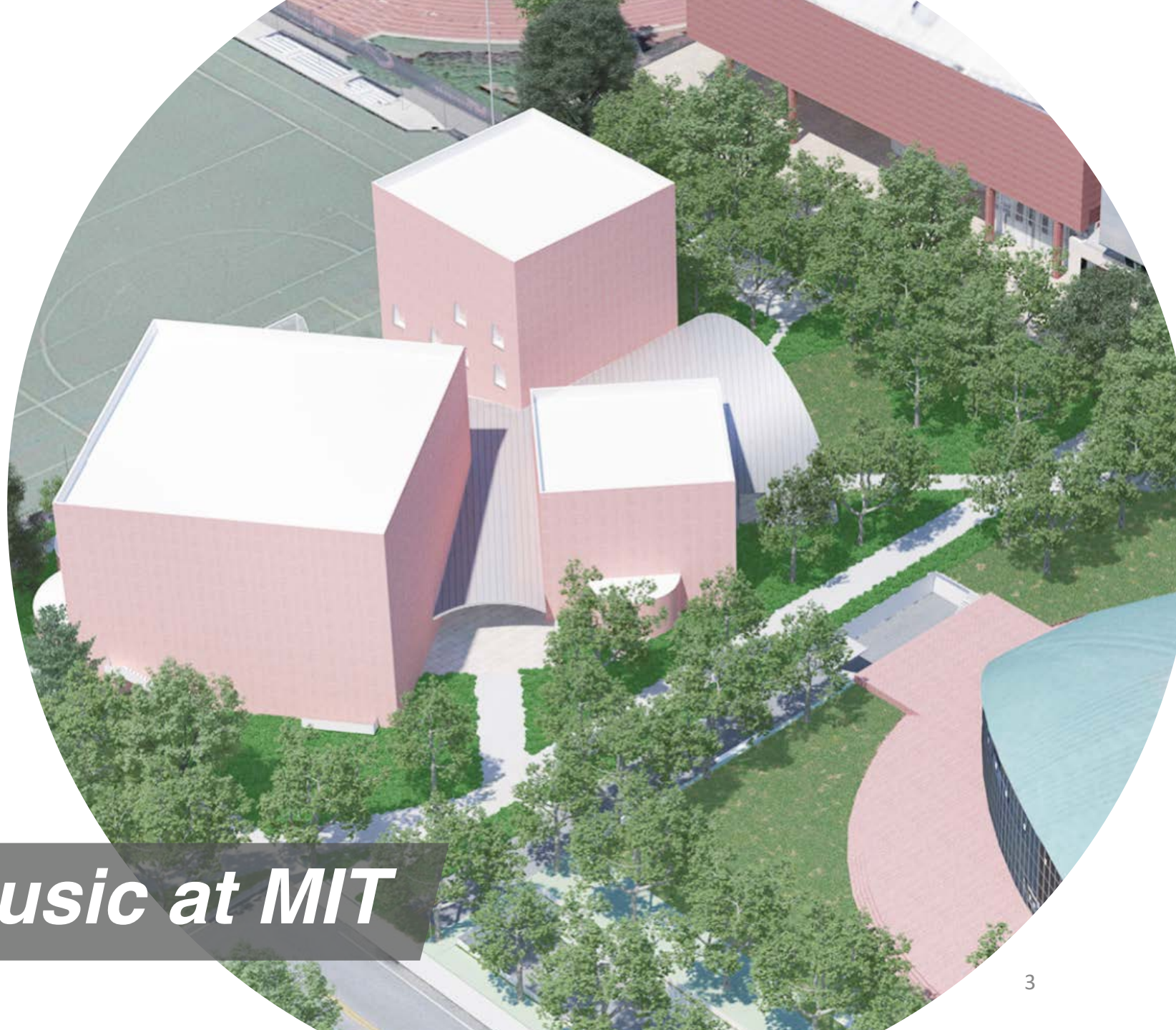
“MIT students tell us again and again that music is absolutely vital to their fulfillment and growth.

Music teaches them the purest, most practical kind of creativity and collaboration. It grounds tomorrow’s technologists in humanity’s deepest values.

And, on a campus with a vast range of cultures music gives us all a way to understand each other.”

— L. RAFAEL REIF, PRESIDENT OF MIT

**In building a new, dedicated music facility at the heart of campus, MIT is reflecting the core place that music studies and performance hold in the lives and wellbeing of our students.**



***the role of music at MIT***

## Overwhelming interest

Each term, nearly half of all MIT undergraduates enroll in music and theater courses that range from conservatory-level training to introductory classes. MTA is among the top five highest enrolled undergrad subjects at MIT, along with EECS, Math, MechE, and Physics.



*the importance of music at MIT*

**MIT is poised to expand its leadership position in the field**, and a 6+21M major looks promising. To achieve this vision, the Institute needs a music maker-space and a research lab to support the EECS+Music major, classes, and activities—such as instrument building and the laptop ensemble.

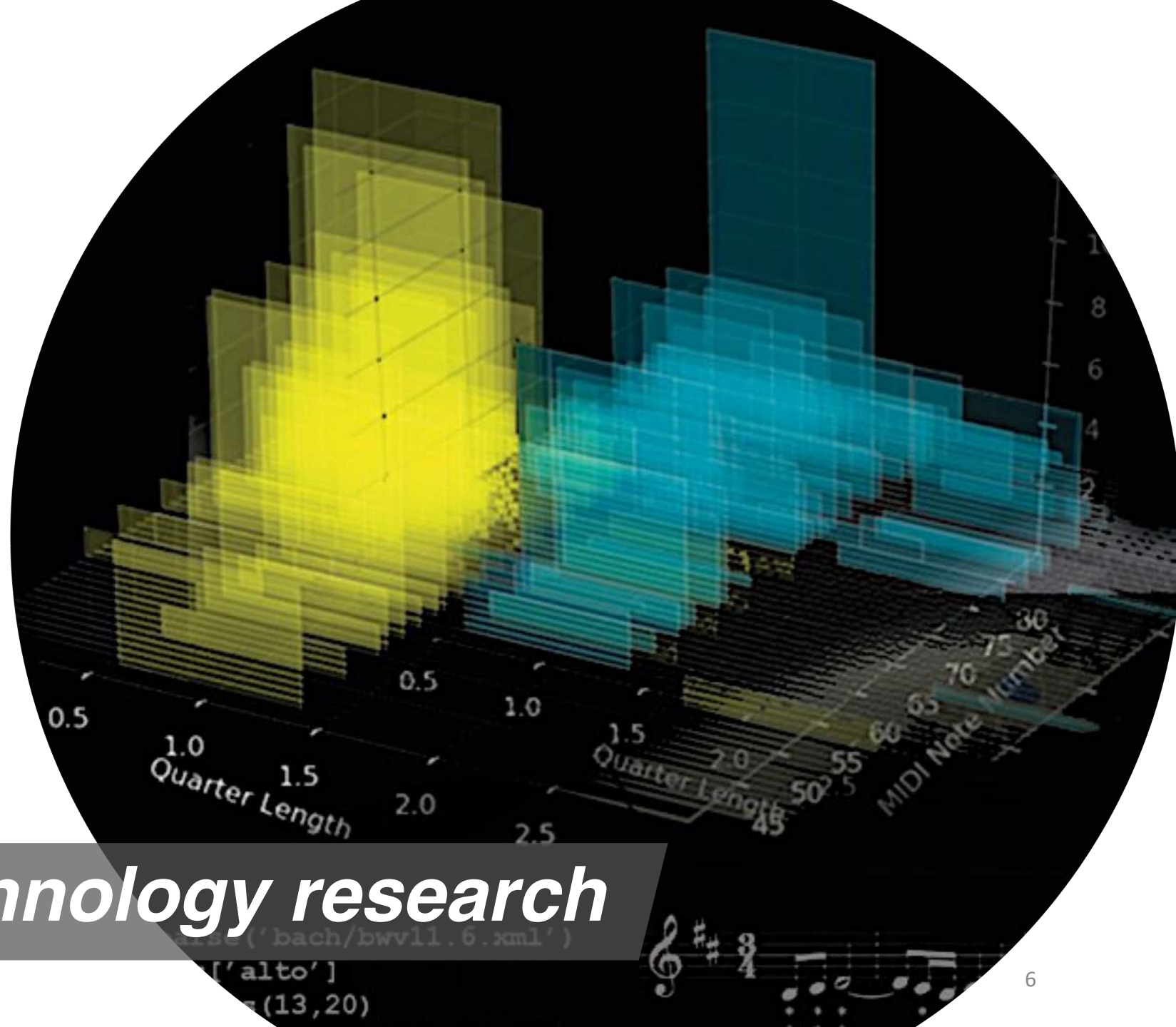
*music technology*



**ConcertCue:** MIT has redefined the audience/performer relationship through hand-held technologies, working with partners like the Boston Symphony Orchestra, New World Symphony and Radius Ensemble.

**music21:** Transformed computational musicology

**New Research:** MIT Music faculty are exploring low-latency remote performance, a critical area of research due to current social distancing practices, with long-term implications.



*music technology research*

**SANAA, the Pritzker-winning, Tokyo-based firm led by Kazuyo Sejima and Ryue Nishizawa, is the architect for the building. The project acoustician is world-renowned Nagata Acoustics.**

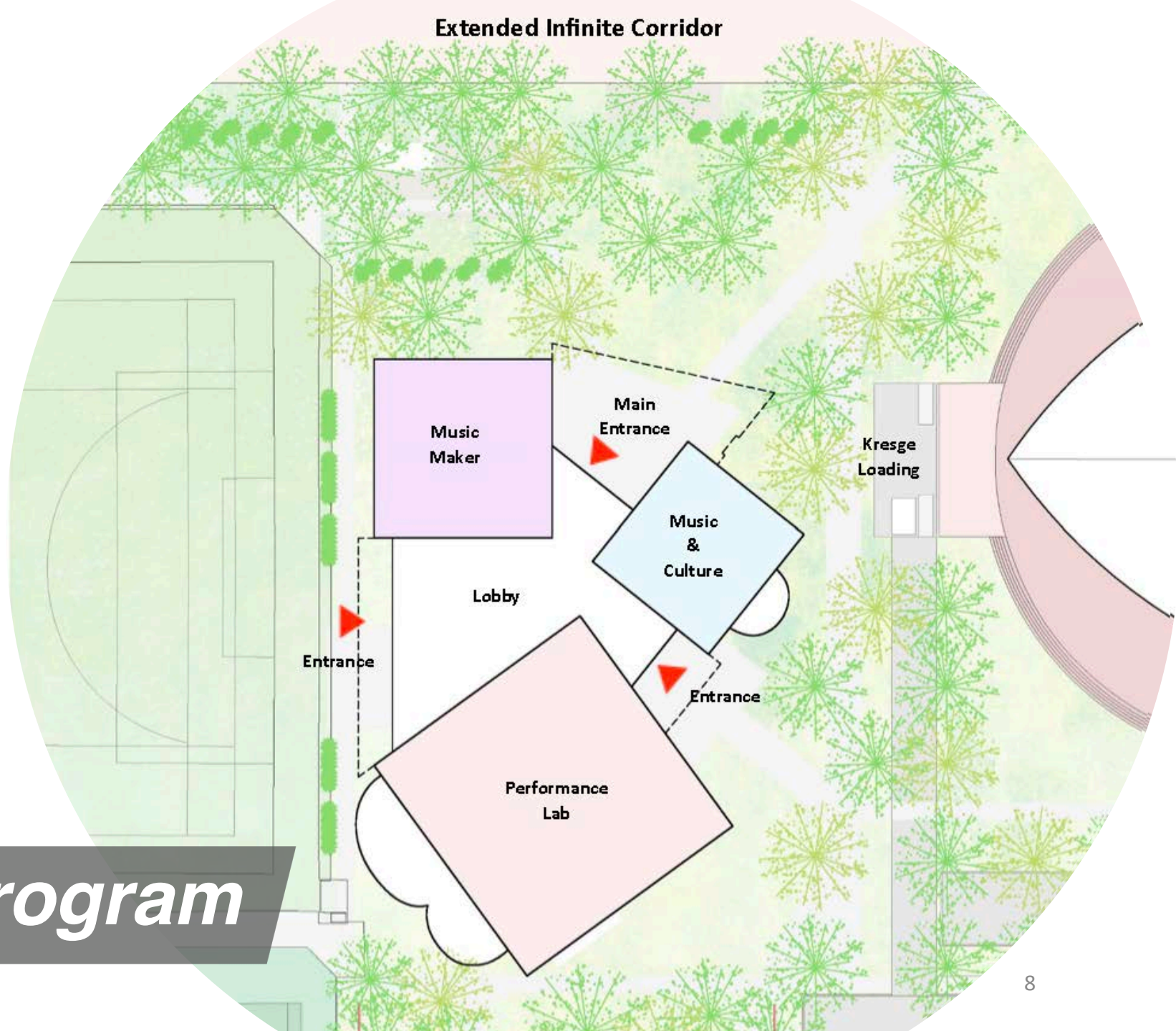


***building design team***

**The primary goals for the building** have led to the design of three distinct components, all connected by a lobby, adding a total of 35K sq. ft. of dedicated space.

- Performance Lab
- Music & Culture Pavilion
- Music Maker Pavilion
- Music Technology Suite
- Recording Studio
- Rehearsal Spaces
- Faculty Offices
- Lobby

# *building program*





**The schematic design process recently concluded;** new renderings will be completed over summer 2020 and the building is currently scheduled to open in 2023.



*project timeline*

\$120.1M total project costs  
\$57.8M total fundraising goal  
\$39.8M funds raised (6/2020)

**\$18M to fundraise**

*project budget*





***Thank you!***